

# Quick Setup Guide

## Mini Network High Speed Dome



### Precautions

Fully understand this document before using this device, and strictly observe rules in this document when using this device. If you install this device in public places, provide the tip "You have entered the area of electronic surveillance" in an eye-catching place. Failure to correctly use electrical products may cause fire and severe injuries.

	<b>WARNING</b>	It alerts you to moderate dangers which, if not avoided, may cause minor or moderate injuries.
	<b>CAUTION</b>	It alerts you to risks. Neglect of these risks may cause device damage, data loss, device performance deterioration, or unpredictable results.
	<b>NOTE</b>	It provides additional information.

#### WARNING

- Strictly observe installation requirements when installing the device. The manufacturer shall not be held responsible for device damage caused by users' non-conformance to these requirements.
- Strictly conform to local electrical safety standards and use power adapters that are marked with the LPS standard when installing and using this device. Otherwise, this device may be damaged.
- Use accessories delivered with this device. The voltage must meet input voltage requirements for this device.
- If this device is installed in places with unsteady voltage, ground this device to discharge high energy such as electrical surges in order to prevent the power supply from burning out.
- When this device is in use, ensure that no water or any liquid flows into the device. If water or liquid unexpectedly flows into the device, immediately power off the device and disconnect all cables (such as power cables and network cables) from this device.
- Do not focus strong light (such as lighted bulbs or sunlight) on this device. Otherwise, the service life of the image sensor may be shortened.
- If this device is installed in places where thunder and lightning frequently occur, ground the device nearby to discharge high energy such as thunder strikes in order to prevent device damage.

#### CAUTION

- Avoid heavy loads, intensive shakes, and soaking to prevent damages during transportation and storage. The warranty does not cover any device damage that is caused during secondary packaging and transportation after the original packaging is taken apart.
- Protect this device from fall-down and intensive strikes, keep the device away from magnetic field interference, and do not install the device in places with shaking surfaces or under shocks.
- Clean the device with a soft dry cloth. For stubborn dirt, dip the cloth into slight neutral cleanser, gently wipe the dirt with the cloth, and then dry the device.
- Do not jam the ventilation opening. Follow the installation instructions provided in this document when installing the device.
- Keep the device away from heat sources such as radiators, electric heaters, or other heat equipment.
- Keep the device away from moist, dusty, extremely hot or cold places, or places with strong electric radiation.
- If the device is installed outdoors, take insect- and moisture-proof measures to avoid circuit board corrosion that can affect monitoring.
- Remove the power plug if the device is idle for a long time.
- Before unpacking, check whether the fragile sticker is damaged. If the fragile sticker is damaged, contact customer services or sales personnel. The manufacturer shall not be held responsible for any artificial damage of the fragile sticker.

### Special Announcement

- All complete products sold by the manufacturer are delivered along with nameplates, quick setup guide and accessories after strict inspection. The manufacturer shall not be held responsible for counterfeit products.
- The manufacturer will update this manual according to product function enhancement or changes and regularly update the software and hardware described in this manual. Update information will be added to new versions of this manual without prior notice.
- This manual may contain misprints, technology information that is not accurate enough, or product function and operation description that is slightly inconsistent with the actual product, the final interpretation of company is as a standard.
- This manual is only for reference and does not ensure that the information is totally consistent with the actual product. For consistency, see the actual product.

#### NOTE

For more information, please refer to website.

### Open package Examination

Open the package, check the appearance of product for no obvious damage, and confirm the item list for table 1-1 is consistent.

Table 1-1 Packing list

Component	Quantity	Remark
Mini High Speed Dome Camera	1	
Quick Setup Guide	1	
Power adapter	1	
A pair of gloves	1	
Wall mounting bracket	1	wall mount bracket optional
Accessories package	1	
"L" Hex wrench	1	
Installation location sticker	1	
Stainless hexagon screw	3	

### Device Structure

#### 2.1 Device Ports

Figure 2-1 Hardware Ports

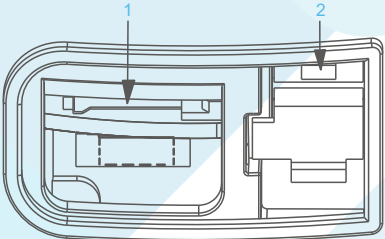
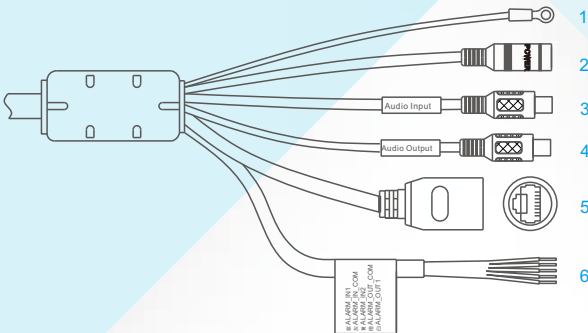


Table 2-1 Hardware Ports Description

ID	Ports Name	Description
1	SD Card slot	<p>Install a SD card.</p> <p> <b>Note</b></p> <ul style="list-style-type: none"><li>Before install a SD card, verify the card not in write protection state.</li><li>Before remove the SD card. Verify the card not in write protection state. Otherwise, the data may be lost ,or the SD card may be damaged.</li><li>Before installing or removing a SD card when the camera is running, stop video recording first.</li></ul>
2	Reset button	Restores the camera to the factory settings by pressing and holding this button for more than five seconds.

Figure 2-2 Multi-head cable

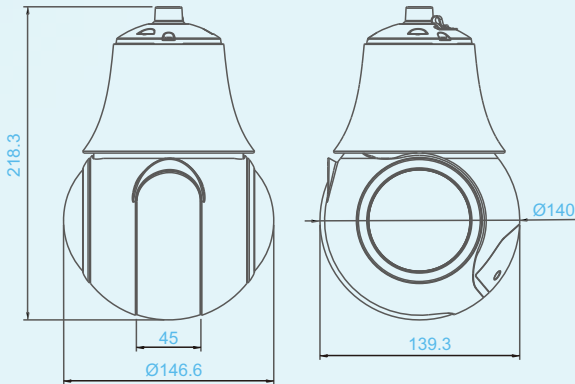


Talbe 2-2 Multi-head cable Description

ID	Core	Description		Remark
1	Grounding wire			
2	Power port	DC 12V power supply wire		
3	Audio input	Receives analog audio signals from devices such as a sound pickup device.		Applied for audio function
4	Audio output	Connects to an external active audio device such as a speaker.		
5	Network port	Connects a standard Ethernet cable.		
6	Purple	Alarm input channel 1	connect alarm input device	Applied for alarm function
	Grey	Alarm input channel common terminal		
	Yellow	Alarm input channel 2	connect alarm output device	
	Orange	Alarm output channel common terminal		
	White	Alarm output channel 1		

#### 2.2 Device Dimensions

Figure 2-3 Dimensions(unit:mm )



### Device installation

#### 3.1 Installation Modes

The Mini PTZ supports wall mounting , Pendant mounting and ceiling mounting.

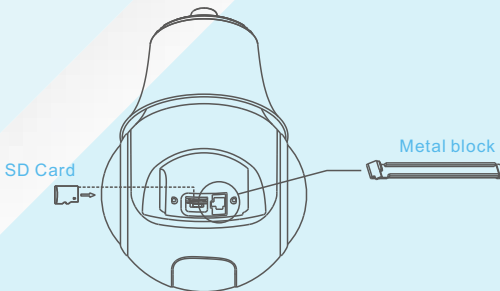
#### 3.2 Installation Steps

Step1 Open the SD card cover in the bottom of the PTZ, remove the shake-proof metal block, insert in SD card and then fasten the SD card cover.

#### CAUTION

Please reserve the metal block. Insert the metal block to prevent the damage for PTZ model when transport again.

Figure 3-1 Removing the shake-proof metal block

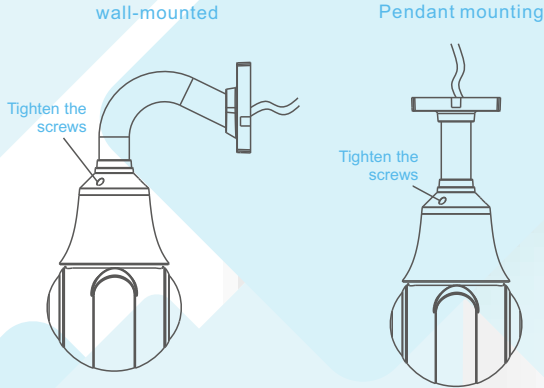


Step2 Stick the Installation location sticker on the Installation surface, Drill three holes based on the marks on the sticker. Drive the swell plastic buttons into the holes.

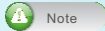
Step3 Install the mini high speed dome.

- 3.1 Wall mounting and Pendant mounting:
- Thread the multi-head cable through the bracket ;
  - Attach the PTZ camera to the bracket and tighten the three screws to fix the bracket and camera,as shown in figure 3-2;
  - Mount the PTZ dome camera to the **mounting surface**, tighten the four screws on the bracket completely.

Figure 3-2 Wall mounting and Pendant mounting

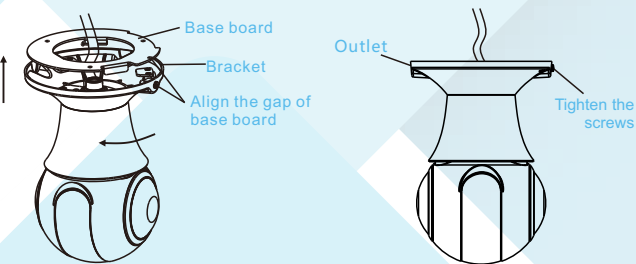


- 3.2 Ceiling Mounting:
- Fix the bracket to the camera using screw in the accessories package ;
  - Match the base board to location sticker, and fit it to ceiling using screws ;
  - Align the gap of base board and the screw of bracket;
  - Put the bracket to match the base board and rotate according to the arrow direction until it's locked as shown in figure 3-3.
  - Tighten the screw to fix the bracket.



you can route cables from the top or from aside. If you use the top routing method, drill a hole in the installation surface first. If you use the aside routing method, please cut the outlet, as shown in figure 3-3, and route the multi-head cable out from the side gap.

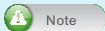
Figure 3-3 Ceiling Mounting



## Quick Configuration ( e.g IE )

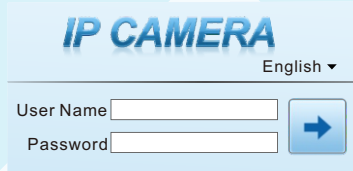
### 4.1 Login


- Step1 Open the Internet Explorer, enter the IP address of IP camera (default value: 192.168.0.120 ) in the address box, and press Enter. The login page is displayed. as shown in figure 4-1 .
- Step2 Input the user name and password.



- The default user name is **admin**. The default password is **admin**. Change the password when you log in the system for first time to ensure system security.
- You can change the system display language on the login page.

Figure 4-1 Login

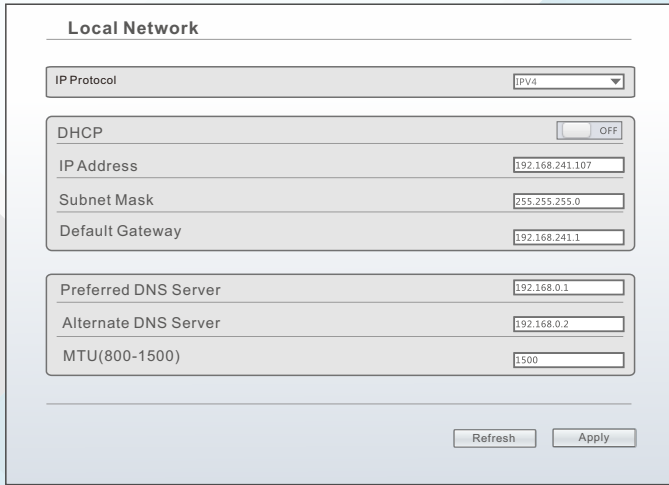


Step3 Click , the main page is displayed.

### 4.2 Modify IP address

- Choose Configuration > Device > Local Network, the Local Network page is displayed.
- Enter the IP address in the IP Address box and click Apply as shown in figure 4-2.
- After the success of the IP address setting, please use the new IP address to log in the Web interface.

Figure 4-2 Local Network

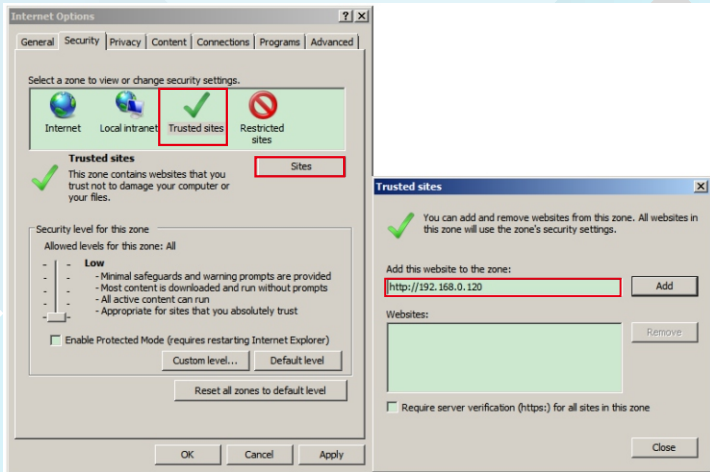


### 4.3 Browsing Video

To ensure the real-time video can be played properly, you must perform the following operation when you log in the web for the first time:

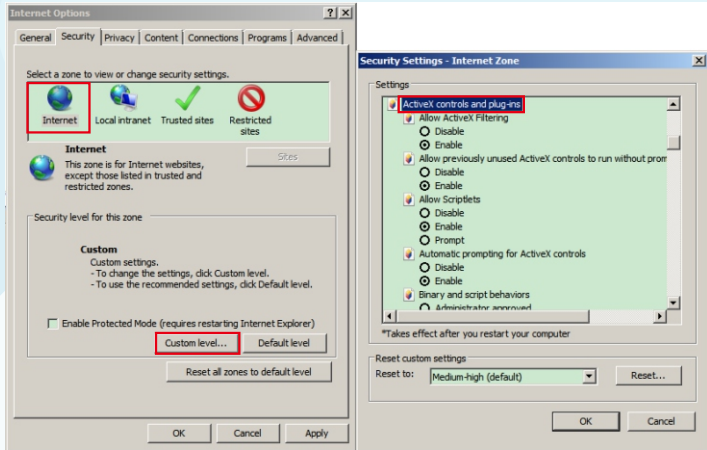
- Step1 Open the Internet Explorer. Choose **Tools > Internet options > Security > Trusted sites > Sites**, in the display dialog box, click **Add**, as shown in figure 4-3.

Figure 4-3 Adding a trusted site

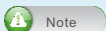


- Step 2 In the Internet Explorer, choose **Tool > Internet Options > Security > Customer level**, and set **Download unsigned ActiveX control and initialize and script ActiveX controls not marked as safe for scripting under ActiveX controls and plug-ins to Enable**, as shown in figure 4-4.

Figure 4-4 Configuring ActiveX control and plug-in



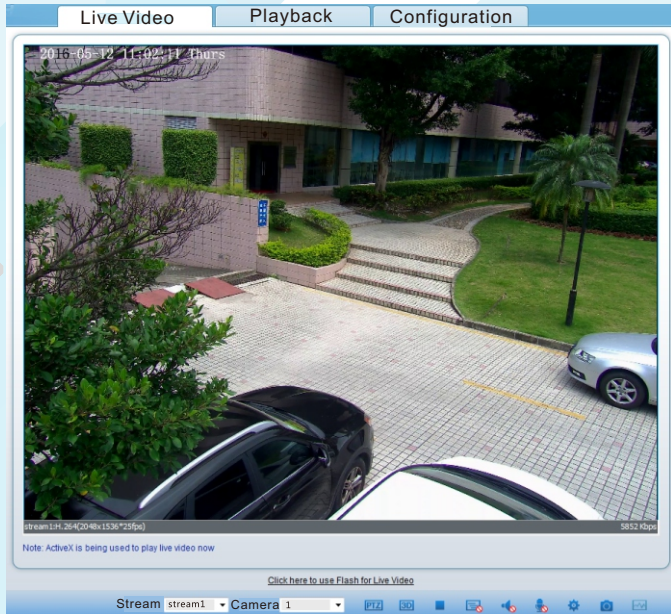
Step3 Download and install the player control as prompted.



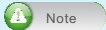
If the repair tips displayed when installing the control , please ignore the prompt, and continue the installation, the login page is displayed when the control is loaded.

To browse a real-time video, click Live Video. The Live Video page is displayed, as shown in figure 4-5.

Figure 4-5 Live Video




### 4.4 Two-way audio



Partial camera do not support two-way audio, this section do not apply.

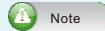
#### 4.4.1 Camera → PC

- Connection :
- Step 1 Connect microphone to audio input interface of camera.
- Step 2 Connect speaker to the PC audio output interface.
- Step 3 Log in camera Web, click  to turn on two-way audio.

#### 4.4.2 PC → Camera

- Step1 Connect microphone to PC audio input interface.
- Step2 Connect speaker to camera audio out interface.
- Step3 Log in camera Web, click  to turn on two-way audio.

### 4.5 Alarm configuration



Partial camera do not support alarm, this section do not apply.

#### Alarm input and Alarm output connection:

- Step1 Connect alarm input device to Alarm IN0 and Alarm COM0 of multi-head cable.
- Step2 Connect alarm output device to Alarm OUT1 and Alarm COM1 of multi-head cable, alarm output interface can connect to normal open device only.
- Step3 Log in Web, Choose **Configuration>Alarm>I/O Alarm**, set the parameters as shown in figure 4-6.
- Step4 Choose **Configuration>Alarm>I/O Alarm Linkage** , enable the I/O Alarm and set the parameters of Schedule Setting.

Figure 4-6 Alarm

